



TOYO UNIVERSITY

GUIDE BOOK 2021



TOYO UNIVERSITY

Contents

01 President Message Founding Spirits and Principles	05 Top Global University Project Career Support Program for International Students	11 Faculties and Departments	18 Japanese Cultural Events and Interaction with Japanese Students
02 Facts and Figures	06 Department of Global Innovation Studies	13 Graduate Schools	19 Partner Institutions and Consortia
03 Why Toyo University?	07 Location and Campus Facilities in and Around Tokyo	14 Research Centers	21 Tuition and Fees
04 History of Founder, Enryo Inoue		15 Program for International Students	22 Scholarships for International Students
		17 Modern Facilities	

University Accreditation

Toyo University has been accredited by the Japan University Accreditation Association (JUAA) since 1953. The accreditation is a symbol of our commitment to guaranteeing the quality and integrity of our educational offerings.



President's Message

Toyo University's globalization strategy can trace its roots back to the philosophy of Dr. Enryo Inoue, who founded Tetsugakukan (private philosophy academy), the predecessor of the University. Dr. Inoue developed his educational ideas through studying Buddhist thoughts in Japan in addition to Western philosophy and psychology while touring overseas. He then set two grand objectives for his education activities—cultivating the ability to think deeply and developing philosophies to be reflected in daily actions—as he believed that these should comprise the basic education required to build world-class talent. Since that time, while offering education based on research results collected from around the world, we have been looking at approaches to help students think deeply and reflect the results of their thinking in their actions.

Toyo University is developing global education under the banner of “TOYO GLOBAL DIAMONDS—Becoming an Asian Hub University for Global Leaders,” adopted by the Ministry of Education, Culture, Sports, Science and Technology (MEXT) in 2014 for its Top Global University Project (Type B). Under this project, new faculties and departments have been created to foster human resources who can demonstrate leadership in international settings, with the first students enrolled under the project graduating in AY2020. We will further advance the TGD concept to continue developing global human resources.



Etsuko Yaguchi
President, Toyo University

Founding Spirits and Principles

The Founding Spirits of Toyo University

1. The Basis of All Learning Lies in Philosophy
2. Integrating Knowledge and Virtue
3. Independence and Self-Initiative

Toyo University's Educational Principles

1. **Develop your own philosophy**
Instilling individuals with the ability to learn and understand diverse values and develop their own philosophy.
2. **Explore the depth of essence more deeply**
Educating individuals who can think logically and systematically about matters of great depth without bias or prejudice.
3. **Take the initiative in tackling social challenges**
Raising individuals who can think independently as they tackle social challenges and work to build better relationships.

Facts and Figures



HISTORY

Founded in **1887.**

FACULTIES AND DEPARTMENTS

13 faculties and
45 departments

GRADUATE SCHOOLS AND COURSES

15 graduate schools and
36 courses

DOUBLE DEGREE PROGRAMS

3

PIONEER IN EDUCATION OF WOMEN

First private university in Japan to enroll female students

in **1916.**

SELECTED FOR TOP GLOBAL UNIVERSITY PROJECT BY MEXT

One of **37** universities nationwide (out of 775) to receive

10 years' worth of grants aimed at helping us become a more internationalized university.



STUDENTS as of May 1, 2021

31,018

30,104 Undergraduate

914 Postgraduate

*The number is provisional.

MALE TO FEMALE RATIO AMONG STUDENTS

6 to 4

INTERNATIONAL STUDENTS

as of May 1, 2020 **1,619**

*Including special permanent residents.

APPLICANTS FOR 2021 ACADEMIC YEAR

89,821 Applicants

TOP **7** among universities in Japan

ALUMNI

as of May 1, 2021 **340,057**

EMPLOYMENT RATE

Class of 2020 Academic Year

97.6%



FACULTY (full-time)

as of May 1, 2021 **773**

Academic Year

Spring.....April - Early August

Fall.....Late September - January



OVERSEAS PARTNER INSTITUTIONS *University-wide as of July 1, 2021

212 universities, **5** consortia,
6 institutions, **3** municipalities in
37 countries / areas

STUDENT EXCHANGE PROGRAM PARTNERS as of July 1, 2021

146 universities and **2** consortia

COURSES TAUGHT IN ENGLISH as of 2020

1,610

1,101 undergraduate 509 postgraduate

OVERSEAS OFFICES

8 as of May 2021



CAMPUSES

5

NUMBER OF BOOKS as of March 31, 2020

1,577,924



SPORTS CLUBS & GROUPS

135

CULTURAL CLUBS & GROUPS

163



Why Toyo University?

1

Rich History of More Than 130 Years

2

Commitment to Internationalization

More international faculty and students,
more courses taught in English,
and more globally oriented programs.

3

Strong Support for Employment in Japan

4

Location

Ideally located in the heart of Tokyo.

5

Diversity

Nearly 32,000 students in
13 faculties and 46 departments,
15 graduate schools and 37 courses.

History and Founder, Enryo Inoue

Toyo's Founder, Enryo Inoue, Who Showed His Great Wisdom in Diverse Fields

The history of Toyo University began in 1887 with the establishment of Shiritsu Tetsugakukan (“Private Academy of Philosophy”) by philosopher Dr. Enryo Inoue. In the early years of Japan’s modernization, Enryo brought forth the idea of “philosophy as the basis of thought for Japanese people living in the new era,” and showed the importance of “carrying out philosophy.” He stated: “Philosophy is the study that determines the principles behind all phenomena. Politics and law, needless to say, but even fields as distant as natural science and art should be founded on philosophy.” Wishing to “benefit those who are not financially well-off and those who do not have the luxury of time,” Enryo sought to open the doors of Tetsugakukan to as many people as possible by lowering the school’s tuition. He was among the first to establish a forerunner to today’s system of distance learning by compiling lectures in *Tetsugakukan Kogiroku* (a collection of lectures), and distributing them to students who

would otherwise not have access to the educational offerings of the school. The spirit of Enryo lives on through the evening courses and correspondence courses of today.

Seeking to provide learning opportunities to those unable to attend regular courses, Enryo went on lecture tours all over Japan, an activity that became his lifework. He gave as many as 5,291 lectures in 60 cities and 2,198 towns and villages over a period of 27 years. Moreover, with the ambition to transform “Japan as a nation of the Orient” into “Japan as a world nation,” Enryo traveled around the world three times to watch and learn from other countries during the Meiji era. This reflects his passion to forge the way for Japan to enter a new age of education.



Three Pillars for Nurturing Globally Talented Individuals

Undertaking Educational and Research Activities Based on Three Basic Principles: Philosophy Education, Internationalization, and Career Education

Drawing inspiration from the spirit of its founder, Toyo University aims to foster “globally talented individuals” with the ability to think from a global perspective, maintain focus, and create their own future.

To achieve this goal, we offer education based on three basic principles: philosophy education, internationalization, and career education.



Top Global University Project

[The Ministry of Education, Culture, Sports, Science and Technology (MEXT)]

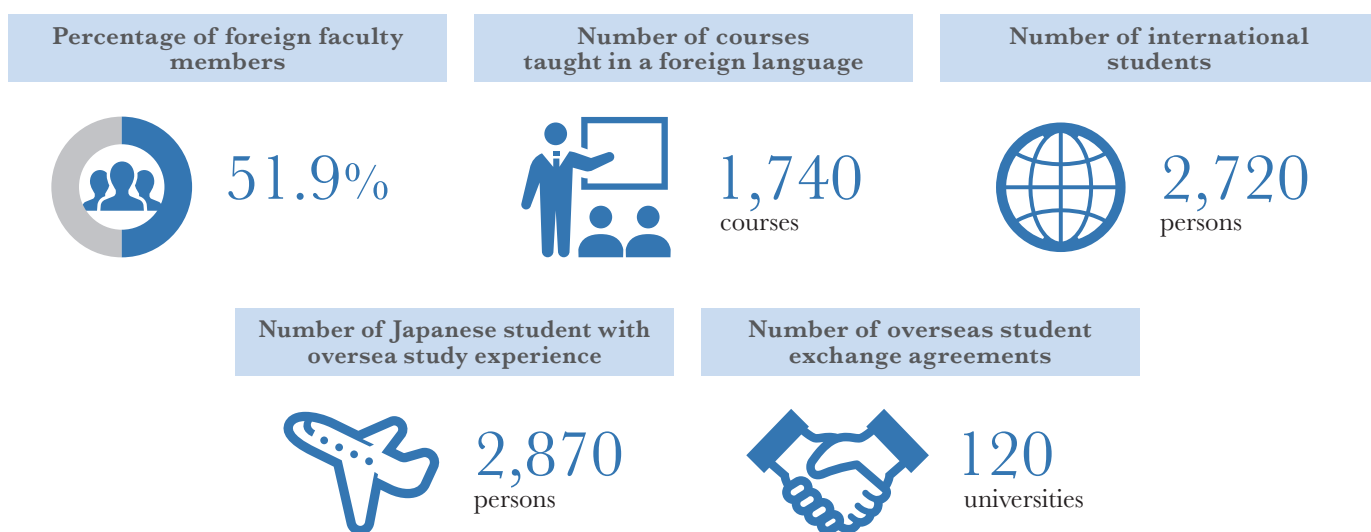


Toyo Global Diamonds — Becoming an Asian Hub University for Global Leaders

Toyo University is currently carrying out educational and governance reform under the initiative “Toyo Global Diamonds –Becoming an Asian Hub University for Global Leaders”. This initiative was selected by MEXT in 2014. Intensive support from MEXT enables us to achieve our

vision of becoming a leading internationalized university and enhancing the global competitive power of higher education in Japan. Toyo offers education aimed at developing students into brilliant “global diamonds”.

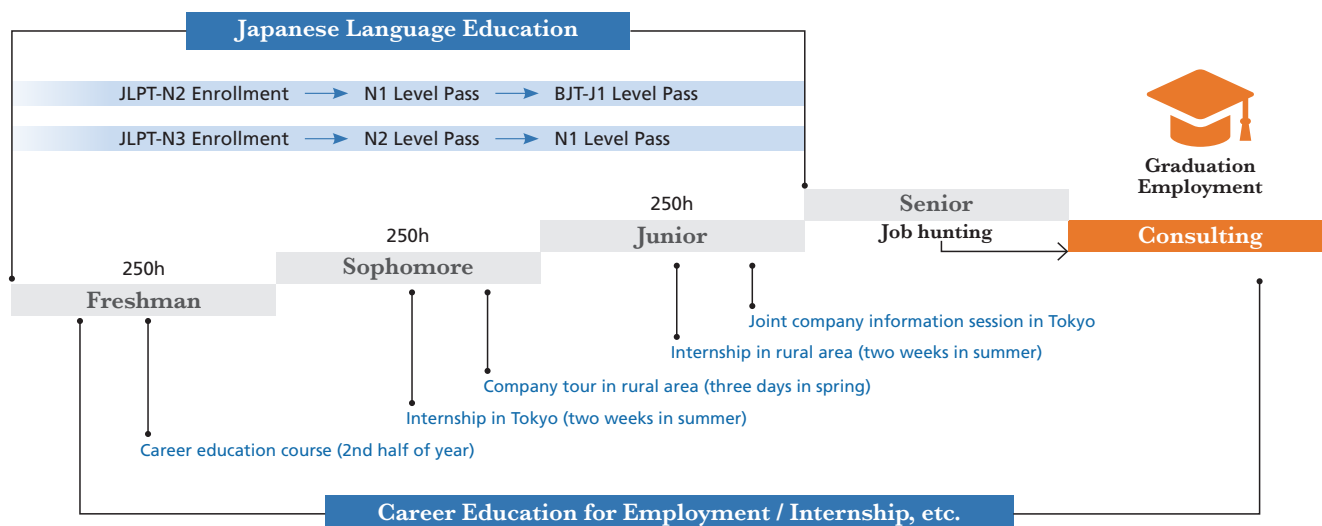
Numerical Objectives of the Initiative by 2023



Career Support Program For International Students

Toyo University offers several programs to help international students develop their career in Japan, including business language programs, job hunting seminars and workshops on CV

writing, interview tips and business etiquette. Toyo University is also one of the 12 bases nationwide of the International Student Employment Promotion Program by MEXT.



A Leading Department in Toyo University's Internationalization

Department of Global Innovation Studies [English Track]

The Department of Global Innovation Studies was newly established in 2017 with the aim of fostering globally competitive professionals who apply their knowledge and abilities to take leadership in a globalized society. All classes are thought in English, all Japanese students are required to study abroad for a year, and 30% of students are international students.



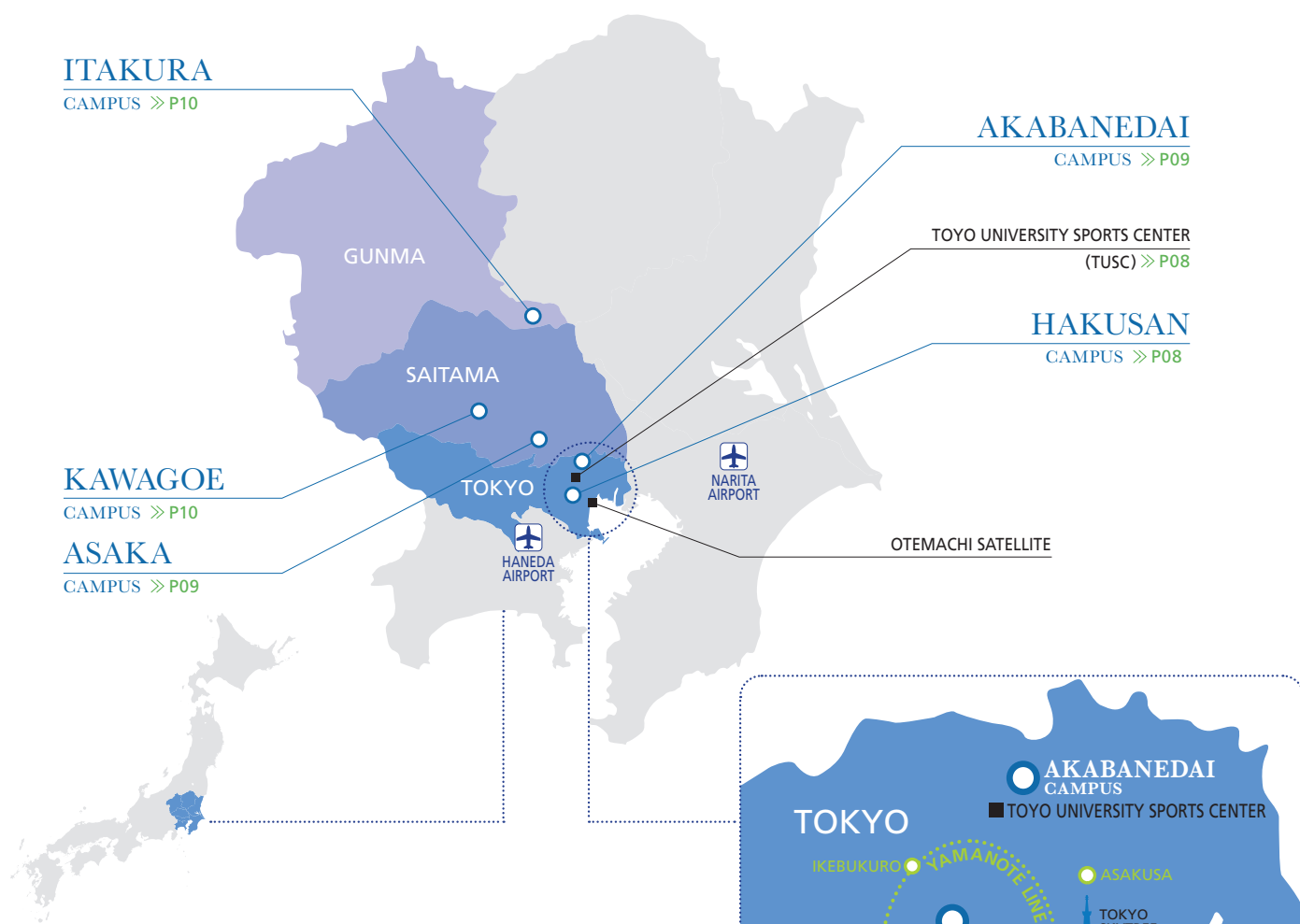
Four-year Process of Learning (model)

Four-year Process of Learning (model)	
1 First Year	Global System Field <ul style="list-style-type: none"> • Sustainable Global Innovations • Global Society and Structures of Governance • ICT and New Industrial Revolution • Contemporary Global Issues and Japan • Global Financial System • Multinational Corporations and the Global System
	International Business Field <ul style="list-style-type: none"> • Introduction to Finance • International Business Today • Japanese Corporations in Asian Markets • International Comparative Studies of Corporate Organizations • Financial Accounting • Role of Entrepreneurs in Creating Social Value
	International Collaboration Field <ul style="list-style-type: none"> • Introduction to Innovation Studies • Globalization and Japanese Cultures • International Social Contributions • Education from International Comparative Perspectives Organizations • International Media Studies
2 Second Year	Global System Field <ul style="list-style-type: none"> • Fundamental Conditions for Economic Development • Corporate Social Responsibility and Social Investment • Global Politics in the 21st Century and International Public Goods • International Organizations and Global Security
	International Business Field <ul style="list-style-type: none"> • Global Strategic Management and Merger and Acquisition • Entrepreneurship and Venture Businesses • International Business Development and Corporate Finances • Social Solidarity Economy and Social Enterprise • Marketing Strategies in Globalized Market
	International Collaboration Field <ul style="list-style-type: none"> • Social Systems in International Perspective • Comparative Cultural Studies • Establishing Global Standards • Multicultural Society and International Organizations • Role of Media in Public Policy Formation
3 Third Year	Global System Field <ul style="list-style-type: none"> • Public-Private Alliances in Global Economy • Mechanisms for Providing International Public Goods • Evolving Frameworks for Resolving International Conflicts • Globalization and Japan
	International Business Field <ul style="list-style-type: none"> • Global Financial Systems: Diversity or Convergence • Multinational Corporations and Market Systems • Business Ethics • Rethinking Japanese Corporations in the Global Economy • IFRS and Other International Accounting Standards • Innovations in Organizational Structures and Decision Making
	International Collaboration Field <ul style="list-style-type: none"> • International Public Opinions and Corporate Behaviors • Media Ethics • Human Security • Mechanism of International Aids • Science, Technology and Society • Globalization of Local Economies
4 Fourth Year	Global System Field <ul style="list-style-type: none"> • Dynamism and Standards in Global Banking, Finance and Capital Markets • Historical Development of Global Economy • Asian Economic Development and Japan • Special Lectures in Global System I-III
	International Business Field <ul style="list-style-type: none"> • International Comparative Studies of Business Revitalization Mechanism • Assessment Systems Used in Corporate Governance • Innovations in Assessment and Management of Human Resources • Special Lectures in International Business I-II
	International Collaboration Field <ul style="list-style-type: none"> • Global Competition and Intellectual Property Rights • International Comparative Studies in Human Resource Development • Commonality and Variation among Asian Values • Special Lectures in International Collaboration I-II

*The above chart is one of model processes of learning in each specialized field. Besides the subjects listed above, these are subjects of liberal arts, language and communication skills, practical activities, and career development.

Location and Campus Facilities In and Around Tokyo

Toyo University's main campus (Hakusan Campus) is located in central Tokyo with four other campuses in the surrounding area. All campuses are conveniently located within a 10-minute walk of the closest railway station.



TOKYO

Tokyo, the capital of Japan, is a city where high-rise buildings and nature exist side by side, and old and new cultures are blended together. The highly developed transportation system makes it easy to access anywhere in the city. The city, full of restaurants, has a rich and varied food culture.



HAKUSAN CAMPUS

Hakusan 5-28-20, Bunkyo-ku, Tokyo

Faculty

Letters
 Economics
 Business Administration
 Law
 Sociology
 Global and Regional Studies
 International Tourism Management

Graduate School

Letters
 Sociology
 Law
 Business Administration
 Economics
 Global and Regional Studies
 International Tourism Management
 Social Welfare



Main Campus Provides a Cosmopolitan Hub for Arts and Humanities

Toyo's Hakusan Campus is located in the heart of Tokyo, and we're just a few subway stops away from many of Tokyo's most iconic areas -Shibuya, Akihabara, Ikebukuro, and Shinjuku. Yet Hakusan Campus is characterized by a calm atmosphere conducive to learning. Sleek, modern architecture is offset by lush trees and open spaces. Just off campus, temples and shrines, hundreds of years old, offer opportunities for quiet reflection. Like Tokyo itself, Hakusan Campus is modern and cosmopolitan with a quiet side just around every corner. Student life at Toyo is as vibrant and eclectic as the city where it is located. Opportunities abound for clubs, circles, internships, volunteer programs, and other extracurricular activities. The contemporary coexisting with the traditional. Frenetic energy balanced by peaceful harmony. Reflection complementing stimulation. That is Toyo University.



1



2

1 Toyo University Sports Center (TUSC)

TUSC is a world-class fitness facility used for sports and health science classes and sports club practices, as well as a dorm for athletes. Located approximately 25 minutes from Hakusan Campus, the facility has a swimming pool, dojos for judo and kendo, a multi-purpose field, and a fitness center

2 University Library

The library houses nearly one and a half million volumes and offers plenty of comfortable study areas.

AKABANEDAI CAMPUS

INIAD HUB-1

Akabanedai 1-7-11, Kita-Ku, Tokyo

Faculty

Information Networking for Innovation and Design (INIAD)

Graduate School

Information Networking for Innovation and Design (INIAD)



Equipped with State-Of-The-Art Information and Communication Technology

Akabanedai Campus INIAD HUB-1 opened in 2017 and is the main campus for the Faculty and Graduate School of Information Networking for Innovation and Design. The impressive building (INIAD HUB-1) produced by Ken Sakamura is equipped with 5,000 state-of-the-art IoT devices. One unique feature of Akabanedai Campus is its “paperless environment”. Digital signages are placed everywhere on campus instead of paper notice boards, and a bookless library (the Media Center) provides an environment where student can view extensive digital archives on the tablets or their own laptop PC.

1 3 The INIAD HUB-1

The exterior of the INIAD HUB-1. It was designed by Kengo Kuma.

2 Media Center

Accessible anywhere on campus via free, secure WiFi, E-books make up the majority of the library's extensive collection.



WELLB HUB-2

Akabanedai 1-7-11, Kita-ku, Tokyo

Faculty

Human Life Design

Graduate School

Human Life Design



Specialized Facilities Offer Practical Hands-On Learning Experiences

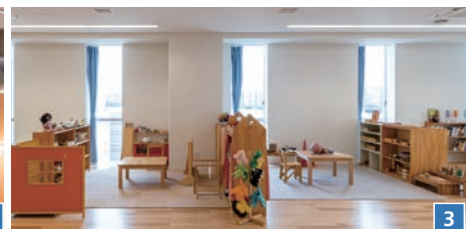
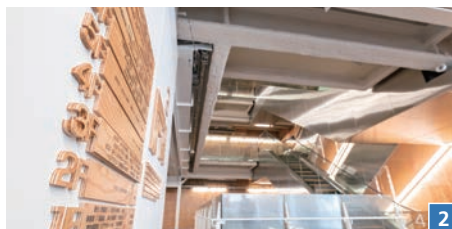
Akabanedai Campus WELLB HUB-2 opened in 2021. As the main campus for the Faculty of Human Life Design and Graduate School of Human Life Design, WELLB HUB-2 is unique for its variety of hands-on coursework. There are special facilities for sports, healthcare support, music, and childcare, where students can learn experientially. WELLB HUB-2 has a large studio with workstations placed around a spacious common area where students work on their universal design projects.

1 2 WELLB HUB-2

The exterior of the WELLB HUB-2 was also designed by Kengo Kuma. The interior uses lots of wood which gives warmth and comfort.

3 Childcare Lab

Students from the Social Work and Childcare Course learn about caregivers' roles in child development in this lab.



ASAKA CAMPUS

Oka 48-1, Asaka-shi, Saitama



Asaka Campus, currently under the renovation, will be the main campus for the Faculty of Life Sciences and the Faculty of Food and Nutritional Sciences and their graduate programs since 2024.

KAWAGOE CAMPUS

Kujirai 2100, Kawagoe-shi, Saitama

Faculty

Science and Engineering
 Information Sciences and Arts

Graduate School

Science and Engineering
 Interdisciplinary New Science
 Information Sciences and Arts



Modern Campus Situated Within Lush Green Surroundings

Toyo University's Kawagoe Campus opened in 1961 when the University established its first science faculty. The campus is located in a serene forest close to Kawagoe, a picturesque historic town in Saitama Prefecture. Kawagoe retains the atmosphere of Edo (the old name of Tokyo) and is nicknamed "Ko-Edo" or "Little Edo". The University runs a field research program based in Ko-Edo in collaboration with the local community, and offers open college courses contributing to the community's lifelong learning programs. The entire campus is involved in environmental protection activities, and many local residents enjoy taking walks within the pristine campus grounds.

1 Audiovisual Design Laboratory

Students learn about network architecture and hardware environments while creating new content which can be presented via the theater system.

2 Monozukuri Workshop

The Monozukuri ("craftsmanship") Workshop is equipped with state-of-the-art resources including a 3D printer, a 3D measuring device, and a machining center.

3 Komorebi Street

Komorebi ("Leafy Sunshine") Street is a sun-dappled promenade that connects Kawagoe's west gate with the main campus building.



1



2



3

ITAKURA CAMPUS

Izumino1-1-1, Itakura-machi, Oura County, Gunma

Faculty

Life Sciences
 Food and Nutritional Sciences

Graduate School

Life Sciences
 Food and Nutritional Sciences



1

Cutting-Edge Research Hub Located on a Spacious Campus

Itakura Campus is a beautiful expansive campus surrounded by a rich natural environment. It is a thriving center that collaborates with regional industries. The campus has a variety of sports facilities including a vast football field and a multi-purpose sports ground-great for workouts and games to unwind after grueling coursework. Adding to the appeal of Itakura Campus are its valuable ecological attributes. Nearby is Watarase- Yusuichi which was recognized as a wetland of international importance under the Ramsar Convention in 2012. The faculties and graduate schools currently at the campus will be relocated to Akabanedai campus and Asaka campus in 2024.

1 Building No.5

The Building No.5 (Laboratory) is a roomy facility for experimentation that is equipped with the latest instruments.

2 Building No.1

This eye-catching building houses a 500-seat lecture hall, as well as the Education and Student Affairs Office.

3 Football Field

This is the home field of Toyo University's women's football team.



2



3

Faculties and Departments

13 Faculties with 45 Departments

Toyo University is committed to carrying on the legacy of its founding spirit, “the basis of all learning lies in philosophy” through diverse educational programs. All faculties offer entrance examinations for international students.

	Faculty	Department	Degree Track		Admission		Campus
			JPN	ENG	Apr.	Oct.	
1	Letters	Philosophy	●		●		Hakusan
		Eastern Philosophy and Culture	●		●		
		Japanese Literature and Culture	●		●		
		English and American Literature	●		●		
		History	●		●		
		Education (Human Development Course, Primary Education Course)	●		●		
		International Culture and Communication Studies	●		●		
2	Economics	Economics	●		●		
		International Economics	●		●		
		Policy Studies	●		●		
3	Business Administration	Business Administration	●		●		
		Marketing	●		●		
		Accounting and Finance	●		●		
4	Law	Law	●		●		
		Business Law	●		●		
5	Sociology	Sociology	●		●		
		Global Diversity Studies	●		●		
		Social Welfare	●		●		
		Media and Communications	●		●		
		Social Psychology	●		●		
6	Global and Regional Studies	Global Innovation Studies		●	●	●	
		Regional Development Studies (Regional Development Studies Course, Regional Studies Course)	●	●	●		
7	International Tourism Management	International Tourism Management	●		●		
8	Information Networking for Innovation and Design	Information Networking for Innovation and Design	●	●*	●	●	Akabanedai
9	Human Life Design	Human Care and Support (Human Care and Support Course, Social Work and Child Care Course)	●		●		
		Health Care and Sports	●		●		
		Human Environment Design	●		●		
10	Science and Engineering	Mechanical Engineering	●		●		Kawagoe
		Biomedical Engineering	●		●		
		Electrical, Electronic and Communications Engineering	●		●		
		Applied Chemistry	●		●		
		Civil and Environmental Engineering	●		●		
		Architecture	●		●		
11	Information Sciences and Arts	Information Sciences and Arts	●		●		
12	Life Sciences	Life Sciences	●		●		Itakura
		Applied Biosciences	●		●		
13	Food and Nutritional Sciences	Food and Life Sciences (Food Science Course, Sports and Food Function Course)	●		●		
		Nutrition and Health Sciences	●		●		

* Some classes will require Japanese language proficiency even if the basic language of instruction is English.

1. Faculty of Letters

The Faculty of Letters has been educating students for more than 120 years on its quest to find the true nature of cross-border, intergenerational humanity and society. Through small seminar classes and other offerings, students are encouraged to build their reading comprehension, writing abilities, and critical thinking skills. We cultivate individuals who will carve out a new future, no matter where in the world they choose to work.

2. Faculty of Economics

Great changes are taking place across Japan and around the world, and our faculty conducts research into the economies of both Japan and the world with a foundation in basic theory. With a focus on small seminar classes, students learn independently through continuous discussion and polish the skills necessary to discover and resolve different issues.

3. Faculty of Business Administration

As globalization and the use of information technologies continue to spread, the diversity and complexity of the business world continues to increase. Students acquire the broader perspective needed to deal with those changes through a wide range of study that includes social economics, environmental issues, and global affairs. This gives them the skills they need to succeed in the field of business.

4. Faculty of Law

The goal of the faculty is to provide students with the mindset, specialized knowledge, and practical abilities they need to resolve legal issues that arise in society in a logical and legally-balanced way. We also place importance on students acquiring the linguistic and other communication skills required to deal with legal issues in global society.

5. Faculty of Sociology

Each department in this faculty provides its own unique learning environment with a shared core based on both theory and empirical evidence. Students use the knowledge they gain in class by applying it to statistical analysis and fieldwork in the real world, thereby gaining the ability to approach social issues from multiple perspectives and find workable solutions.

6. Faculty of Global and Regional Studies

Our world faces a diverse array of issues touching upon economics, poverty, scarcity of resources, the environment, conflict and more. We aim to find solutions to those issues by cultivating individuals capable of working on the world stage and contributing to regional and societal development. Students gain a global perspective and knowledge on a variety of problems, thereby acquiring the practical skills they need to find solutions.

7. Faculty of International Tourism Management

Tourism research in this faculty is split into two fields: tourism industry and tourism policy. We aim to give students the skills they need to achieve their dreams of working in tourism, so they can support the tourism industry as it continues to globalize and contribute to the future of tourism. Our students become tourism industry and policy experts.

8. Faculty of Information Networking for Innovation and Design

Information and communication technologies (ICT) are those technologies that connect people, systems, organizations and different fields, and make it possible to provide products and services never seen before. Students in this faculty learn about how to connect and integrate computer science, design, business, civil systems, and other specialized fields of study to gain a broader perspective and the ability to create new values.

9. Faculty of Human Life Design

Students in this faculty learn about human life design, the study of lifestyles, health, living, and living environments. An emphasis is placed on quality of life as students acquire the knowledge they need to improve quality of life. We aim to cultivate individuals who are highly specialized with a comprehensive outlook on life through community outreach activities and hands-on manufacturing experience.

10. Faculty of Science and Engineering

Our faculty nurtures engineers, scientists, and architects who work in manufacturing, and help build our communities and nation. We believe that students should understand that creating can be fun, and aim to produce scientific and engineering professionals who will help make Japan a better place to live.

11. Faculty of Information Sciences and Arts

How can our society make the best use of ICT? Students in our faculty consider this issue as they become skilled information creators and users. Students gain knowledge and skills that go beyond the traditional boundaries of the arts and sciences, to make them better able to utilize information through a perspective that considers a wide range of fields, from social, economic, cultural, artistic, and psychological, to media, design, sports, and more.

12. Faculty of Life Sciences

The life sciences are expected to make great contributions to the field of regenerative medicine, and to solving the various food-related and environmental issues in the world today. Students gain a comprehensive understanding of life itself as they grow into individuals capable of positively contributing to the development of various fields that include medicine, the environment, agriculture, food and education.

13. Faculty of Food and Nutritional Sciences

Society is looking more and more to research into food and health that will help improve people's quality of life through better health and greater vitality. Students gain a comprehensive understanding of food safety, security and functionality, and the human body and nutrition, and become capable of applying what they learned to solve real world problems.

<http://www.toyo.ac.jp/en/academics/>



Graduate Schools

15 Graduate Schools and 36 Courses of study

With the aim of cultivating global citizens equipped not only with specialized skills that meet world standards, but also with a strong sense of character, Toyo University's 15 graduate schools and 36 courses of study prepare students for the challenges of an interconnected world.

	Graduate School	Course	Degree Track		Admission		Campus
			JPN	ENG	Apr.	Oct.	
1	Letters	Philosophy	●		●		Hakusan
		Indian Philosophy and Buddhist Studies	●		●		
		Japanese Literature and Culture	●		●		
		Chinese Philosophy	●		●		
		English Language and Literature	●		●		
		History	●		●		
		Education	●		●		
		International Culture and Communication Studies	●	●	●		
2	Sociology	Sociology	●		●		Hakusan
		Social Psychology	●		●		
3	Law	Private Law	●		●		Hakusan
		Public Law	●		●		
4	Business Administration	Business Administration and Marketing	●	●	●		Hakusan
		Business, Accounting and Finance	●		●	●	
5	Economics	Economics	●		●		Hakusan/Otemachi
		Public-Private Partnership	●	●	●	●	
6	Global and Regional Studies	Global Innovation Studies		●	●	●	Hakusan
		Regional Development Studies	●	●	●	●	
7	International Tourism Management	International Tourism Management	●	●	●	●	Hakusan
8	Social Welfare	Social Welfare	●		●		Hakusan
9	Science and Engineering	Advanced Mechatronics Systems	●		●	●	Kawagoe
		Biomedical Engineering	●		●	●	
		Electricity, Electronics and Communications	●		●	●	
		Applied Chemistry	●		●	●	
		Civil and Environmental Engineering	●		●	●	
		Architecture	●		●	●	
		Architecture, Civil and Environmental System Design	●		●	●	
10	Interdisciplinary New Science	Bio-Nano Science Fusion	●	●	●	●	Itakura
11	Information Sciences and Arts	Information Sciences and Arts	●	●	●	●	
12	Life Sciences	Life Sciences	●	●	●	●	
13	Food and Nutritional Sciences	Food and Nutritional Sciences	●		●	●	Akabanedai
14	Information Networking for Innovation and Design	Information Networking for Innovation and Design	●		●	●	
15	Human Life Design	Human Care and Support	●		●		Akabanedai
		Health Care and Sports	●		●		
		Human Life Studies	●		●		
		Human Environment Design	●		●		

1. Graduate School of Letters

This is the oldest graduate school at the University and it offers eight courses across the humanities. This graduate school inherits Toyo University's tradition of learning by looking at human activities from a broad perspective while exploring the fundamental nature of language by examining language as a "tool of thinking." Graduates become highly-skilled professionals capable of working as researchers, educators, public servants and so forth.

2. Graduate School of Sociology

This graduate school provides two courses of study for those aiming to help solve the issues facing society: Sociology and Social Psychology.

We aim to gather knowledge through investigation, experiments, and theoretical research, and to cultivate skilled individuals with the goal of contributing to society through a variety of research. We are always focused on bettering our world as we train experts who are capable of solving the issues we face.

3. Graduate School of Law

This graduate school offers two degree courses in Private Law and Public Law, through which we nurture legal experts who are capable of carrying through the spirit of the law, and whose fair and flexible thinking makes them indispensable to the world in which we live. The Course of Public Law provides practical education and we even offer coaching for applicants hoping to become licensed tax accountants.

4. Graduate School of Business Administration

This graduate school comprises the Course of Business Administration and Marketing (offered in the daytime and in the evening), which aims to foster the development of researchers and highly skilled professionals with expertise in both business administration and marketing, and the Course of Business, Accounting and Finance (offered mainly in the evening and on weekends), which aims to produce globally competent businesspersons, accounting professionals including licensed tax accountants, and licensed small and medium-sized business consultants with practical consulting skills. Through small class sizes and comprehensive thesis guidance, both courses develop the kinds of workers with creative knowledge needed in today's world.

5. Graduate School of Economics

The Course of Economics trains future researchers in economics, and cultivates individuals capable of contributing to the corporate world, government, and local environments. The Course of Public-Private Partnership(*) is the only PPP master's program in the world. There are three sub-courses: City Management, PPP Business, and Global PPP.

* Evening classes are offered on weekdays at Otemachi Satellite. Saturday classes are held at Hakusan Campus.

6. Graduate School of Global and Regional Studies

This graduate school offers students a systematic interdisciplinary education through a balance of theoretical and practical programs that focuses on a hands-on teaching approach. This allows us to provide our students with an international perspective that allows them to work throughout our world, which faces many problems, but also has great potential. We produce the future leaders of autonomous and sustainable regional development who use their specialized advanced capabilities to contribute to the building of communities in Japan and around the world.

7. Graduate School of International Tourism Management

This graduate school is designed to train future leaders capable of implementing groundbreaking policies that will revolutionize the field of inbound tourism, and individuals who can build bridges between Japan and the rest of the world through international tourism development projects. We also aim to cultivate the educators who train those future leaders, and researchers who contribute to the academic development of the applied field of tourism studies.

8. Graduate School of Social Welfare

Our goal is to provide our students with the skills they need to analyze the issues faced by welfare societies and to expand and develop social resources needed to solve them. We also provide on-campus research facilities and an educational structure built upon fieldwork in Japan and around the world, which allows us to give our graduates theoretical and practical skills and knowledge that will enable them to work in social administration, community social work, social action and other fields that aim to help solve the various social problems that people face.

9. Graduate School of Science and Engineering

By understanding the laws and concepts of basic natural science, and applying this to science and technology, human resources, researchers, and educators with high-level professional ability, creativity, humanity, and strong ethical views are cultivated.

10. Graduate School of Interdisciplinary New Science

This graduate school is built upon an interdisciplinary and integrated ideal of bringing together the life sciences with nanotechnology and materials science, with the aim of helping Japan develop into a nation of scientific and technological creativity. We train future front-line researchers in education and research while utilizing a wide range of cutting edge equipment.

11. Graduate School of Information Sciences and Arts

Information serves as the lingua franca of the interdisciplinary field of information sciences. Our students become highly-skilled professionals capable of applying themselves worldwide through gaining the cutting-edge ICT knowledge and techniques this course provides. Our educational methods inspire them to focus on their own competencies.

12. Graduate School of Life Sciences

The life sciences play a major role in addressing the changing needs of society and finding the solutions needed to improve and maintain our global environment, secure a stable food supply, handle issues related to medicine and aging, and much more.

Based on the life sciences and applied biosciences, and interrelating these two, we seek out cutting edge, world-class research themes.

13. Graduate School of Food and Nutritional Sciences

This graduate school takes a global perspective when it comes to food safety and security in our quest to find solutions to extending life expectancy through food, nutrition and sports. We cultivate researchers who engage in richly creative and flexible research and development, and professionals with highly-specialized knowledge and abilities.

14. Graduate School of Information Networking for Innovation and Design

The internet connects people with things, and even connects things to other things, bringing great change to the world. In order to harness these changes for the betterment of our world, we engage in high-leveled education and research through specialists' collaborations, which are aimed at applying ICT in the fields of business, civil systems, engineering, and design. Through this, we contribute not only to individual fields but to society as a whole, and nurture those professional human resources who can create and lead the next stage of the technological era.

15. Graduate School of Human Life Design

This graduate school approaches the issues that arise from living in our increasingly complex and diverse world from multiple perspectives from such fields as welfare, childcare, health, sports, the environment and object design, all of which touch upon our lives. We have developed educational programs that are closely connected to real world issues faced in each field, and use them to train skilled professionals, researchers and educators who contribute to improving people's quality of life.

 <http://www.toyo.ac.jp/en/academics/gsl>



Research Institutions and Centers

- Center for Academic Research Promotion
 - Institute of Human Sciences
 - Institute of Social Sciences
 - Institute of Oriental Studies
 - Asian Cultures Research Institute
 - Institute of Regional Vitalization Studies
 - Research Institute of Industrial Technology
 - Institute of Life Innovation Studies
- Industry Government Academia Partnership Center
- Bio-Nano Electronics Research Centre
- Asia Public-Private Partnership Institute

- Inoue Enryo Center for Philosophy
- Center for Global Innovation Studies
- Information Networking for Innovation and Design Collaboration Hub for University and Business
- Center for Computational Mechanics Research
- Research Center for Public-Private Partnership
- Center for Sustainable Development Studies
- International Research Center for Philosophy
- Research Center for Development of Welfare Society
- Research Center for Biomedical Engineering

▼ Researchers Information System of Toyo University

 <http://ris.toyo.ac.jp/search/index.html>



Programs for International Students

Degree Programs

Toyo University is home to 13 faculties comprising 45 departments and 15 graduate schools comprising 36 courses.

In addition to courses taught in Japanese, students can take courses taught in foreign languages. In particular, the number of classes taught in English has been increasing year by year and there are 1,610 courses (509 of which are for graduate students) taught in English (as of 2020).

Admissions

▼ Undergraduate Program

<http://www.toyo.ac.jp/nyushi/en/admission/>



▼ Graduate Program

<http://www.toyo.ac.jp/en/academics/gsperspective>



Short-Term Programs

Short-Term Programs allow students to examine Japanese culture and society, comparing traditional and modern, as well as urban and rural Japan. Some programs also offer an opportunity to learn about the unique and dynamic business world of Tokyo. The Short-Term Programs offer an unforgettable combination of classroom activities, field trips, and experiential learning, including a homestay in the rural countryside. Since 2020, online short programs are also available.

Toyo University Hosts Short-Term Programs twice a year.

| August | Theme: Traditional x Modern, Urban x Rural

| January | Theme: Experience the SNOW Life!

The programs are two weeks long including a homestay experience in rural area of Japan.



Day 1	Check in at accommodations	Day 8	Free day
Day 2	Orientation and lecture	Day 9	Lecture and field trip
Day 3	Lecture and field trip	Day 10	Lecture and field trip
Day 4	Homestay in rural area	Day 11	Lecture and field trip
Day 5		Day 12	Lecture and field trip
Day 6		Day 13	Presentation
Day 7		Day 14	Check out from accommodations

Example schedule



Customized Programs

We also arrange customized programs for as little as one day, featuring contents in English, Japanese or both!

EX)

- | Lectures | Japanese related lectures, Japanese language courses, etc.
- | Activities | Calligraphy, Japanese tea ceremony, sumo, Japanese harp, etc.
- | Field Trips | Japanese traditional garden (Rikugien), Asakusa, Akihabara, TOKYO SKYTREE, etc.
- | Other | Company visit, homestay in rural area, etc.

▼ Latest Information

toyo.ac.jp/en/international-exchange/prospective/english-swp

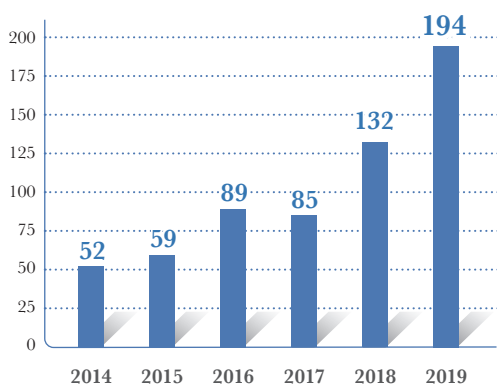


Study Abroad Program

When international students study at Toyo University, they don't just make friends with students from Japan. They make friends with students from around the world. Each year, the size and diversity of Toyo's international study abroad student body

increases, thanks in part to the high student satisfaction and overwhelmingly positive recommendations from our alumni. By studying abroad at Toyo University, they can join a unique global network of bright and talented international students.

Incoming Study Abroad Students by Year (2014-2019)



Country Share (2019)

United States	23.7%
Korea	9.8%
France	8.2%
Taiwan	7.7%
Netherlands	6.7%
China	6.7%
Italy	5.7%
Others	31.4%



Further Information

<https://www.toyo.ac.jp/en/international-exchange/prospective/Study-Abroad-Program-at-Toyo/>



NEST (Nihongo for Exchange & International Students at Toyo)

NEST is based on the Common European Framework of Reference for Languages (CEFR) and has classes ranging from level 1 (beginner level) to level 4 (B1 levels of CEFR). We have established "theory" and "practice" classes to steadily improve Japanese language skills. We also offer skill-based courses such as reading and listening, as well as active classes that enable students to learn about Japanese culture and Japanese society, to suit the diverse, individual objectives and needs of international students.

Period	Time	Mon.	Tue.	Wed.	Thu.
1	9:00 ∨ 10:30	Japanese for Beginners:Theory	Japanese for Beginners:Practice	Japanese for Beginners:Theory	Japanese for Beginners:Practice
		or Integrated Japanese:Theory	or Integrated Japanese:Practice	or Integrated Japanese:Theory	or Integrated Japanese:Practice
2	10:40 ∨ 12:10	Japanese Listening	Japanese Reading	Japanese Writing	Project Work

Lunch hour

3	13:00 ∨ 14:30	Japanese Culture and Society or			
		Introduction to Japanology			

Example time table

Level Standards

Beginner	For students with no background in Japanese language. Approx. A1-1(CEFR)
Elementary	For students who are able to use and understand minimal Japanese language. Approx. A1-2(CEFR)
Pre-Intermediate	For students with upper elementary-level background in Japanese language. Approx. A2(CEFR)
Intermediate	For students with Pre-Intermediate-level background in Japanese language. Approx. B1(CEFR)

Further Information

<https://www.toyo.ac.jp/en/international-exchange/prospective/Study-Abroad-Program-at-Toyo/next/>



Japanese Language Programs for International Students

In addition to the Japanese Language and Culture Courses for Exchange Students Toyo offers variety of Japanese extracurricular language programs that caters from absolute beginner to the advanced learners.

Japanese STEP UP Course

Programs in 4 areas of learning targets

1. JLPT preparation course (from N3 to N1 level)
2. Grammar
3. Japanese for successful job hunting
4. Conversation (several courses based on CEFR)

Japanese Writing Program

• Program-based course of 6 sessions

-8 levels from beginner to advanced students

JW1-JW3: Create coherent sentences.

Write sentences in correct Japanese
Write introductions and explanations

JW4-JW6: Write sentences that convey information in an organized manner

Write reports and university assignments
Write graduation and master's theses

JW7: Create job application sheets (ES) that conveys strengths

JW8: Write emails and thank-you notes for job hunting and work

• Single session course

-3 types to choose from

1. Thesis writing tutorial (graduation or master's)
2. Job Application sheet (ES) tutorial
3. Tutorial for writing on other themes

Business Japanese Training Program for International Students

Designed for international students who are interested in working in Japan, it aims to help students to develop Japanese language skills for logical and professional communication in business settings.

Further Information

<https://www.toyo.ac.jp/en/international-exchange/international/jpl/>



Facilities

Accommodations for International Students and Visiting Faculty

Toyo has two international dormitories in Tokyo, which provide great access to campuses and major tourist spots such as Asakusa and Shinjuku. Residents will be invited to a variety of international events, seminars and other learning

opportunities. The dorms are equipped with basic daily items including a bed, desk and refrigerator, and Resident Assistants provide support for safe and comfortable dorm life.

International Dormitories

	AI-House (in Akabanedai)*	International House (in Sendagi)
Rooms & Rates	Single: 96,000 JPY/month	Single: 81,000 JPY/month Double: 51,000 JPY/month
Meals	Included (Mon-Fri, breakfast & dinner)	Not available (kitchen available in each unit)
Major equipment	Shared bath and toilets, common kitchen, Wi-Fi, bed, desk, refrigerator, AC, laundry	Bath and toilets shared within unit, kitchen, Wi-Fi, bed, desk, refrigerator, AC, washing machine and dryer
Common spaces	Music room, multi-purpose studio, study rooms, shared living rooms and kitchens, tatami spaces	Multi-purpose hall



AI-House



International House



International House

*AI-House will open in March, 2022.

Cafeterias

Students can dine-in Toyo's award winning cafeterias. Delicious Italian, Indian, Korean, Chinese, Turkish, and of course Japanese cuisine are available at reasonable prices.

Cafeteria Menu



Sports Center & Computer Facilities



Sports Center



Computer Facilities

Japanese Cultural Events and Interactions with Japanese Students

International students at Toyo University have unlimited opportunities to experience Japanese culture firsthand.

English Community Zone (ECZ)

ECZ is a lounge type space on campus where Toyo students and international students get together to relax, play games, listen to music, and hang out—in English. In addition, ECZ hosts evening events every month, such as a Halloween party, pajama party, and Christmas party. ECZ is the perfect place to unwind and make new friends.



Homestay

Students can experience authentic Japanese life by spending the weekend doing a homestay with a Japanese family in the countryside of Gunma prefecture. Enjoying home-cooked meals, playing with homestay family children, hiking in the countryside, and soaking in hot springs are just a few of the activities that make the Itakura Homestay one of the international students' favorite experiences during their time in Japan. During the same weekend, students also take part in several traditional cultural activities, such as a tea ceremony, attending a lecture on Buddhism, listening to (and playing) taiko drums, pounding rice into mochi, and more.

Kimono Wearing

Exchange students have a chance to wear an authentic Japanese kimono, enjoy the tea ceremony, and get a taste of traditional culture.



Sumo

How would you fare against a full-sized sumo wrestler? Do you think you could knock him down? As an International student at Toyo you get to find out by participating in a training session with Toyo's sumo team (and then sitting down to dinner with them afterwards). If you would rather just watch sumo, we've got you covered. Every winter, exchange students attend the annual Grand Sumo Tournament held at the world famous Ryougoku Kokugikan Sumo Hall.

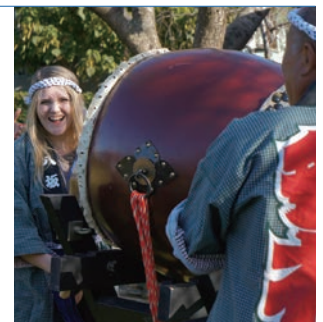


Language Exchange Partner (LEP) Program

All interested international exchange students are connected with LEPs, Toyo student volunteers who help the students practice their Japanese and better understand Japanese culture.

Clubs

Toyo University strongly believes that student activities contribute to the enrichment of campus life. With 41 athletic clubs and 300 other student clubs, everyone can find a group of students that share their interests.



Japanese Calligraphy Experience

While much of life in Tokyo moves at a frenetic pace, the Japanese Calligraphy Experience gives international exchange students an opportunity to explore the calm and reflective side of Japanese culture. Artistic expression, emerging Japanese skills, and individual personalities come together as students use traditional brushes, ink, and paper to write Japanese kanji that reflect who they are.



Partner Institutions and Consortia as of July 1, 2021

Institutions

Australia

CQUniversity
Curtin University
Deakin University
International College of Management, Sydney
[Monash University](#)
Southern Cross University
University of Newcastle
[University of Queensland](#)
University of the Sunshine Coast

Austria

FHWien der WKW/University of Applied Sciences for Management and Communication
Paris-Lodron-University Salzburg
[Salzburg University of Applied Sciences](#)
[University of Applied Sciences Upper Austria](#)
[University of Vienna](#)

Bangladesh

[Bangladesh University of Engineering and Technology](#)
Shahjalal University of Science & Technology

Belgium

Thomas More University of Applied Sciences
University of Liège

Brazil

University of Campinas
University of São Paulo

Bulgaria

[Plovdiv University](#)
Sofia University St. Kliment Ohridski
Technical University of Sofia

Cambodia

Royal University of Phnom Penh

Canada

Brock University
[Centennial College](#)
Concordia University of Edmonton
Douglas College
George Brown College
Kwantlen Polytechnic University
Lakehead University
Okanagan College
Saint Mary's University
[St. Lawrence College](#)
Thompson Rivers University
University of Lethbridge
University of Manitoba
University of Saskatchewan
[University of Victoria](#)
University of Winnipeg
Vancouver Island University

Chile

[Fundación Centro Meri](#)

China

Beijing Institute of Technology
Beijing Language and Culture University
Chinese University of Hong Kong, Shenzhen
Dalian Maritime University
Dalian Neusoft University of Information

Dalian University of Foreign Languages
Dalian University of Technology
East China Normal University
[Fudan University](#)
[Henan Institute of Science and Technology](#)
Jilin University
[Jinan University](#)
[Liaoning University](#)
Macau University of Science and Technology
[Nankai University](#)
North China University of Science and Technology
[North China University of Technology](#)
[Northwest University of Political Science](#)
Ocean University of China
[Renmin University of China](#)
Shandong University
Shanghai International Studies University
Shanghai University
Shanghai University of Engineering Science
Shanghai University of International Business and Economics
Shanxi University
Sias International University
[Sichuan University](#)
Taiyuan University of Science and Technology
[University of International Business and Economics](#)
University of Nottingham Ningbo China
Wenzhou University
Xi'an International Studies University
[Xiamen University](#)

China (Hong Kong)

[Hong Kong Polytechnic University](#)
Open University of Hong Kong

Finland

[Haaga-Helia University of Applied Sciences](#)
JAMK University of Applied Sciences
[Metropolia University of Applied Sciences](#)

France

Catholic University of Paris
[Institut d'Etudes Politiques de Toulouse](#)
Sorbonne Université
Université de Franche-Comté
Université de Lille
Université de Nantes
Université de Rennes 1
[Université de Strasbourg](#)
Université de Strasbourg EMS
Université de Strasbourg IEP
Université Paris Diderot
[University Catholique de Lille](#)
[University of Cergy-Pontoise](#)

Germany

Munich University of Applied Sciences
Philipps-Universität Marburg
University of Bayreuth

Hungary

Budapest Metropolitan University
[Budapest University of Technology and Economics](#)

India

[C.M.S. College](#)
Indian Institute of Technology Delhi

Indian Institute of Technology Madras
Jawaharlal Nehru University
Mangalam Educational Society, Mangalam College of Engineering
[Ramaiah Institute of Technology](#)
Sree Chitra Tirunal Institute for Medical Sciences and Technology
University of Kerala

Indonesia

[Institut Hindu Dharma Negeri Denpasar](#)
Institut Teknologi Sepuluh Nopember
Maranatha Christian University
[Parahyangan Catholic University](#)
[Syiah Kuala University](#)
Universitas Gadjah Mada
Universitas Sebelas Maret

Ireland

Dublin City University
University of Limerick

Italy

Ca' Foscari University of Venice
[Polytechnic University of Milan](#)
[Sapienza University of Rome](#)
University of Bologna
University of Camerino
University of Florence
University of Salento
University of Turin

Kenya

Jomo Kenyatta University of Agriculture and Technology

Lithuania

Vilnius University
[Vytautas Magnus University](#)

Malaysia

HELP University
Sunway University
Taylor's University
Universiti Kebangsaan Malaysia
[Universiti Teknologi Mara](#)
Universiti Teknologi Malaysia
University of Malaya
University of Nottingham Malaysia

Mexico

Universidad de Monterrey

Netherlands

[Amsterdam University of Applied Sciences](#)
Fontys University of Applied Sciences
[HAN University of Applied Sciences](#)
HZ University of Applied Sciences
Rotterdam University, Rotterdam Business School
Saxion University of Applied Sciences
Tio University of Applied Sciences

New Zealand

Unitec Institute of Technology
[University of Otago](#)

Norway

[Oslo Metropolitan University](#)
UiT The Arctic University of Norway

University of Tromsø

Philippines

Caraga State University
Cebu Technological University
De La Salle University - Dasmariñas
Father Saturnino Urios University
Mapúa University
Saint Joseph Institute of Technology
University of San Jose-Ricoletos
[University of The Philippines](#)
University of the Philippines Cebu
University of the Philippines Diliman

Poland

[Cracow University of Economics](#)
[Wroclaw University of Economics](#)

Romania

Bucharest University of Economic Studies
Politehnica University of Timisoara
University of Bucharest

Russia

Skolkovo Institute of Science and Technology

Slovenia

University of Ljubljana

South Korea

Busan University of Foreign Studies
[Catholic Sangji College](#)
Daegu University
Dongguk University
[Geumgang University](#)
Hankuk University of Foreign Studies
Hannam University
Hanyang University
Inha University
Konkuk University
Kookmin University
[Kyung Hee University](#)
Sejong University
Sungkyunkwan University
Wonkwang University

Spain

University of Deusto

Sweden

[KTH Royal Institute of Technology](#)
[Linnaeus University](#)

Switzerland

University of Lucerne
[University of Zurich](#)

Taiwan

[Chaoyang University of Technology](#)

Chinese Culture University
Chung Yuan Christian University
Fo Guang University
Fu Jen Catholic University
Hungkuang University
I-Shou University

Lunghwa University of Science and Technology
National Chung Hsing University
Providence University
Shih Chien University
Tunghai University
[Wenzao Ursuline University of Languages](#)

Thailand

Asian Institute of Technology
[Assumption University](#)
Chiang Mai University
Chulalongkorn University
Phranakhon Si Ayutthaya Rajabhat University
Srinakharinwirot University
[Thai-Nichi Institute of Technology](#)
Thammasat University

Turkey

[Ankara University](#)

United Kingdom

Cardiff University
[Coventry University](#)
[Hertford College](#)
Regent's University London
University of Central Lancashire
University of Edinburgh
[University of Kent](#)
University of Liverpool
[University of London](#)
University of Northumbria at Newcastle
[University of Oxford](#)
[University of Warwick](#)
[University of WINCHESTER](#)
York St John University

United States

Augustana College
Boston University
California State University Bakersfield
California State University Channel Islands
California State University, Dominguez Hills
California State University, Monterey Bay
California State University, Stanislaus
Chatham University
Chicago State University
College of the Desert
Flathead Valley Community College
[Florida Atlantic University](#)
Fox Valley Technical College
[Georgia Institute of Technology](#)
Hartwick College
Hawai'i Pacific University
Johnson & Wales University
Lewis-Clark State College
Lindsey Wilson College
Maryville University
[Minnesota State University, Mankato](#)
Northwest Missouri State University
[Northwest University](#)
Oregon State University
Pace University
Portland State University
Presbyterian College
Purdue University Northwest

Rice University

San Francisco State University
State University of New York Brockport
The College of New Jersey
University of California San Diego Extension
University of California, Santa Barbara
University of Colorado Colorado Springs
[University of Hawaii at Hilo](#)
University of Hawai'i Kapi'olani Community College
University of Houston
University of Missouri-St. Louis
University of Montana
University of Nebraska at Kearney
University of North Alabama
University of Tennessee, Knoxville
[University of Washington Continuum College](#)
West Texas A&M University
Western Michigan University
Winona State University

Uzbekistan

Tashkent State Institute of Oriental Studies
[Turin Polytechnic University in Tashkent](#)
Uzbekistan State World Languages University

Viet Nam

Banking Academy of Vietnam
[Foreign Trade University](#)
FPT University
[Hanoi Architectural University](#)
[National University of Civil Engineering](#)
Vietnam Japan University
Vietnam National University Ho Chi Minh City

Consortia

CIS Abroad
IES Abroad
International Association of Universities (IAU)
International Student Exchange Programs (ISEP)
University Mobility in Asia and the Pacific (UMAP)

Organization

Institute of Nuclear Research of the Hungarian Academy of Science
Romualdo Del Bianco Foundation
The National Council for Public-Private Partnerships
The United Nations Economic Commission for Europe
The Washington Center
Urban Land Institute, Development Bank of Japan

■ Black: University Wide
■ Blue: Faculty Wide
■ Orange: Both

Tuition and Fees [As of 2021]

Faculty

(unit: Yen)

Faculty	Department	Academic Fees					Other Cost	Total fee for the year of admission	The second year and after (reference)
		Admission fee	Tuition	Facility fee	Lab fee	Equipment fee	Membership fee of Ikuseikai (Students Support Association)		
Letters, Economics Business Administration, Law		250,000	710,000	220,000	—	—	5,000	1,185,000	935,000
Sociology	Sociology	250,000	710,000	220,000	—	—	5,000	1,210,000	960,000
	Social Welfare	250,000	710,000	220,000	—	25,000	5,000	1,210,000	960,000
	Media and Communications	250,000	710,000	220,000	—	10,000	5,000	1,195,000	945,000
	Social Psychology Global Diversity Studies	250,000	710,000	220,000	—	15,000	5,000	1,200,000	950,000
Global and Regional Studies International Tourism Management		250,000	780,000	220,000	—	—	5,000	1,255,000	1,005,000
Information Networking for Innovation and Design		250,000	990,000	260,000	—	—	5,000	1,505,000	1,255,000
Human Life Design	Human Care and Support Health Care and Sports	250,000	830,000	200,000	—	—	5,000	1,285,000	1,035,000
	Human Environment Design	250,000	880,000	260,000	70,000	—	5,000	1,465,000	1,215,000
Science and Engineering		250,000	990,000	260,000	85,000	—	5,000	1,590,000	1,340,000
Information Sciences and Arts		250,000	930,000	260,000	40,000	—	5,000	1,485,000	1,235,000
Life Sciences, Food and Nutritional Sciences		250,000	990,000	260,000	80,000	—	5,000	1,585,000	1,335,000

Graduate School

(unit: Yen)

Graduate School/Course		Program	Academic Fees				Total fee for the year of admission	
			Admission fee	Tuition	Facility fee	Lab fee		
Letters, Sociology, Law, Business Administration, Economics, Global and Regional Studies, International Tourism Management, Social Welfare, Human Life Design		Master	Toyo Graduates	—	450,000	90,000	—	540,000
			Others	270,000	450,000	90,000	—	810,000
		Doctor	Toyo Graduates	—	450,000	70,000	—	520,000
			Others	270,000	450,000	70,000	—	790,000
Business Administration	Business, Accounting and Finance; Concentration in SME Consultant Certification	Master	Toyo Graduates	—	900,000	90,000	160,000	1,150,000
			Others	270,000	900,000	90,000	160,000	1,420,000
Economics	Public-Private Partnership	Master	Toyo Graduates	—	600,000	300,000	—	900,000
			Others	270,000	600,000	300,000	—	1,170,000
Human Life Design	Human Environment Design	Master	Toyo Graduates	—	450,000	90,000	70,000	610,000
			Others	270,000	450,000	90,000	70,000	880,000
		Doctor	Toyo Graduates	—	450,000	70,000	70,000	590,000
			Others	270,000	450,000	70,000	70,000	860,000
Science and Engineering, Interdisciplinary New Science, Information Sciences and Arts, Life Sciences, Food and Nutritional Sciences		Master	Toyo Graduates	—	550,000	130,000	120,000	800,000
			Others	270,000	550,000	130,000	120,000	1,070,000
		Doctor	Toyo Graduates	—	550,000	80,000	120,000	750,000
			Others	270,000	550,000	80,000	120,000	1,020,000
Information Networking for Innovation and Design		Master	Toyo Graduates	—	550,000	250,000	—	800,000
			Others	270,000	550,000	250,000	—	1,070,000
		Doctor	Toyo Graduates	—	550,000	200,000	—	750,000
			Others	270,000	550,000	200,000	—	1,020,000

Currency Rate as of July, 2021

Currency	1 USD	1 EUR	1 GBP	1 AUD	1 CNY	100 KRW	100 VND	100 IDR	1 THB
Rate (¥)	110.11	132.69	154.49	84.18	17.13	9.81	0.48	0.77	3.50

Scholarships for International Students

Scholarships students can apply after the entrance

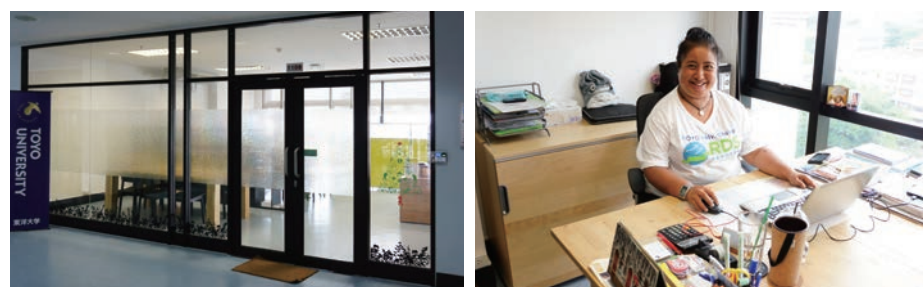
Scholarship	Allotments	Undergrad.	Grad.	Can be combined with other scholarships	Eligibility
Tuition Reduction Scholarship	30% of tuition	●	●	●	◆ Status of Residence: Student *In selecting the recipients, academic grades are considered.
Masajuro Shiokawa Scholarship	¥100,000/month (¥1,200,000/year)	●	●	×	◆ Status of Residence: Student ◆ Outstanding academic records
Toyo University Scholarship for Academic Excellence	¥300,000/year	●	×	●	◆ Academic year: 2-4 ◆ Outstanding academic records, achievements and personality
Monbukagakusho Honors Scholarship for Privately Financed International Student	¥48,000/month × 12 months	●	●	●	◆ Status of Residence: Student ◆ International students with exceptional academic and interpersonal skills who are having financial difficulties that may interfere with their studies
Toyo University Graduate School Scholarship	¥300,000/year	×	●	●	◆ Outstanding both in academics and personality
Toyo Top Global University Project Scholarship	¥144,000/month for master's degree programs ¥145,000/month for doctoral degree programs	×	●	×	◆ Status of Residence: Student ◆ Nationality: A country that has diplomatic relations with Japan ◆ Outstanding academic records

For more information, please visit our website at <https://www.toyo.ac.jp/en/academics/student-support/award/award-ssa/>



Overseas Offices

Toyo University has overseas offices and liaison offices in 8 locations in 5 countries. The primary purpose of our overseas offices is to expand and strengthen our international partnerships, through facilitating joint research projects, organizing academic exchanges, arranging visits by professors and students, and coordinating internships. Toyo continues to strengthen and diversify our global network.



Photos: Toyo University Bangkok Office.

- Bangkok Office at Chulalongkorn University
- Delhi office at Indian Institute of Technology Delhi
- The liaison office in Los Angeles at Affinity Associates
- The liaison office in Vietnam (Hanoi, Ho chi Minh, Da Nang) at Kyodai JCS
- The liaison offices in China (Beijing and Shanghai) at GES

Videos to know more about Toyo University

Toyo University introduction movie: Toyo U x To You

<https://youtu.be/7EWjMnB28ks>



For prospective degree seeking international students: Research, Education and Student Life at Toyo University

<https://youtu.be/0quTQJJGzI>



<https://youtu.be/AyMqOwGsU3M>
(with Chinese subtitle)



For prospective study abroad students: Study Abroad at Toyo University

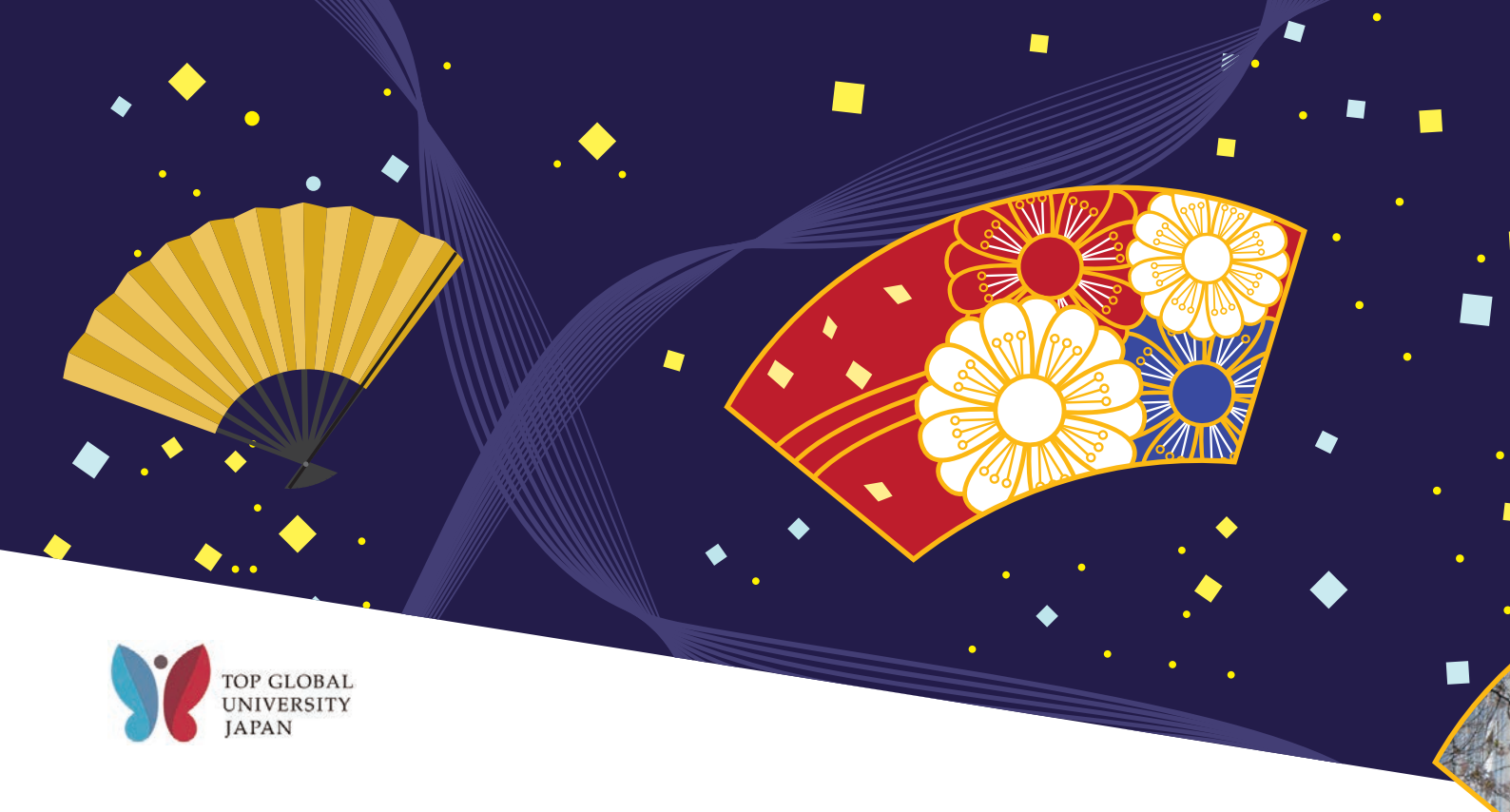
<https://youtu.be/zL5cdo1KUrY>



<https://youtu.be/-8Gi6cTACv4>
(with Japanese Subtitle)



Note: The above videos are on YouTube.



TOP GLOBAL
UNIVERSITY
JAPAN

Degree Programs

Undergraduate Programs

🌐 <http://www.toyo.ac.jp/nyushi/en/>

🏢 Admissions Office

✉️ nyushi@toyo.jp

Graduate Programs

🌐 <https://www.toyo.ac.jp/en/academics/gs/prospective/>

Hakusan Campus ✉️ mldaig@toyo.jp

Akabanedai Campus (INIAD) ✉️ ml-iniad-em@toyo.jp

Akabanedai Campus (WELLB) ✉️ mlags@toyo.jp

Kawagoe Campus ✉️ mlkdaigakuin@toyo.jp

Itakura Campus ✉️ mlitakyomu@toyo.jp

Non-Degree Programs

🌐 <http://www.toyo.ac.jp/en/international-exchange/>

🏢 International Affairs Office

✉️ ml-intl@toyo.jp