



Kagawa Nutrition University

The Characteristics of the Graduate School of KNU and How to Apply for Admission

~Thorough support with a small number of international students~

1. About KNU, Mission and Education Goal

The KNU is a Japan's **first and only private university** specialized in nutrition science with its **87 years history**, covering not only nutrition science related topics but also other areas including health sciences, food sciences, school nursing and food culture and business etc.



Our Mission and Value

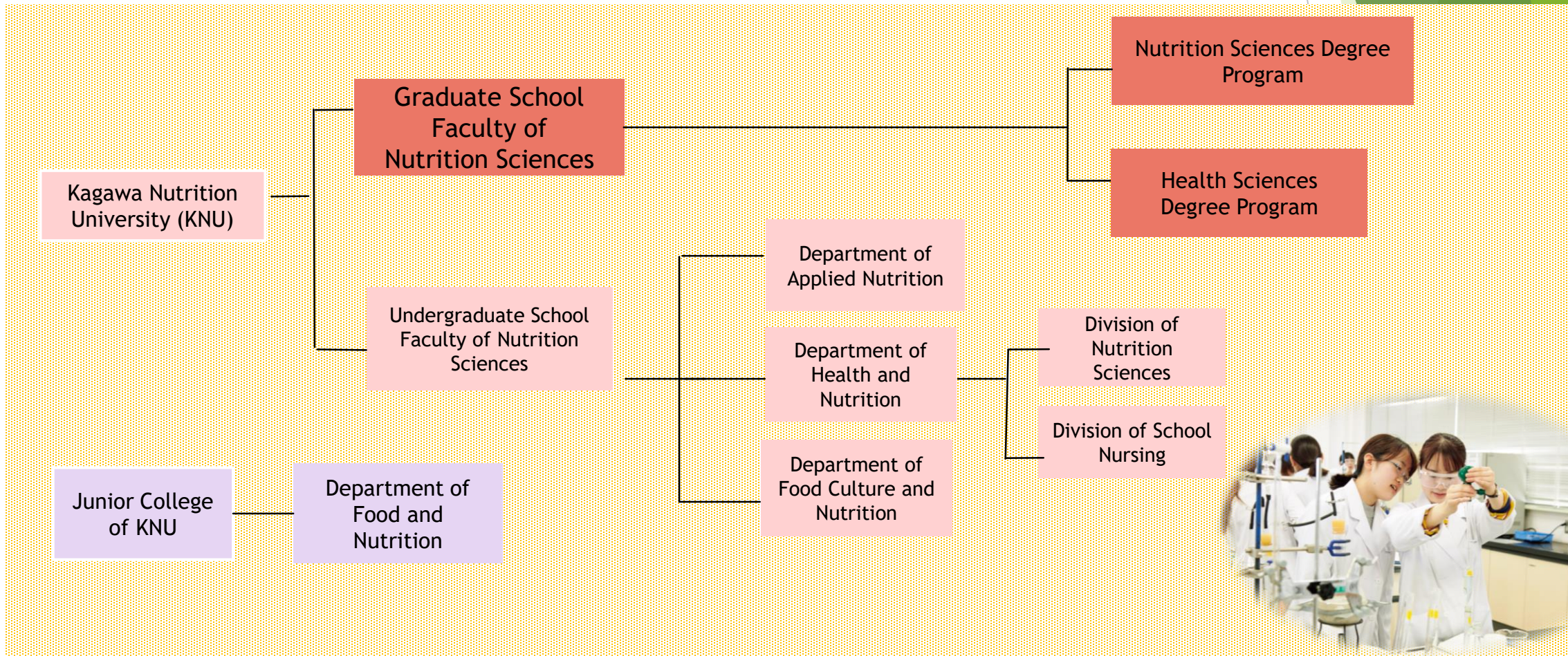
To maintain and improve health through a balanced diet and proper nutrition.

Education Goals

1. Provide support for students to become specialized in nutrition, health, and food, which are closely interlinked, and help translate the knowledge they acquire into practical skills in order to contribute to the wellbeing of the general public.
2. Provide support for all graduates to succeed in passing the national exams to become certified registered dietitians, and to help them secure related and fulfilling jobs.

2. Composition of the Graduate School of KNU

Pursuing and deepening nutritional research that is in tune with people's lives. The goal of the graduate school is to develop creative research skills that can respond to a diverse and changing society.



3. A Wide Range of Research Fields

The most comprehensive courses provided in Japan to enhance students' **innovative spirit of inquiry and competency** in Nutrition Sciences

Nutrition Sciences Program

Master's Course

- | | |
|---|--|
| <ul style="list-style-type: none"> • Human Growth and Development • Fundamental Nutrition • Nutritional Physiology • Clinical Nutrition | <ul style="list-style-type: none"> • Medical Nutrition • Nutrition Management • Nutrition Education • Community Nutrition • Health Management at School |
| <ul style="list-style-type: none"> • Molecular Nutrition • Biochemistry • Physiology | <ul style="list-style-type: none"> • Food Science • Food Functions • Food Preparation Science • Cookery & Dietary Life |
| <ul style="list-style-type: none"> • Food Cultural Anthropology • Environmental Education | |

Doctoral (Ph.D.) Course

Health Sciences Program

Master's Course

- Environmental Health
 - Community Health
 - Biostatistics and epidemiology
 - Kinanthropometry
 - Practical Exercise
-
- Exercise and Pathophysiology
 - Integrative Physiology Medical Science
 - Clinical Biochemistry
 - Molecular Biology
-
- Health Education in Nursing
 - Health at School
 - Physical Development and Health
 - School Nursing Teacher Theory

Doctoral (Ph.D.) Course

4. Merits of Studying at the Graduate School of KNU

➤ Wide choice of specialization in and beyond nutrition science

While KNU is called 'nutrition university', it covers a wide range of fields beyond nutrition science such as the themes shown below.

Public health	Environmental Education	Clinical Biochemistry
Molecular Biology	Food Service Management	Sports Methodology
Health Longevity	Food Sciences	Community Nutrition



➤ Close guidance by research supervisors

A typical class is composed of only 1 to 5 graduate students so that the students can be closely guided by the research supervisors. Students are then encouraged to interact with the supervisors even if their Japanese proficiency is limited.

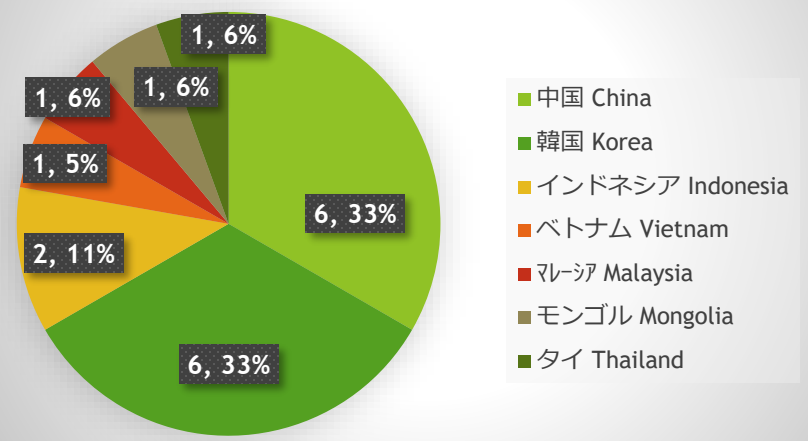
Supervisors also provide supplementary support in English in case the students' understanding is not enough.

➤ Thorough support prior to admission

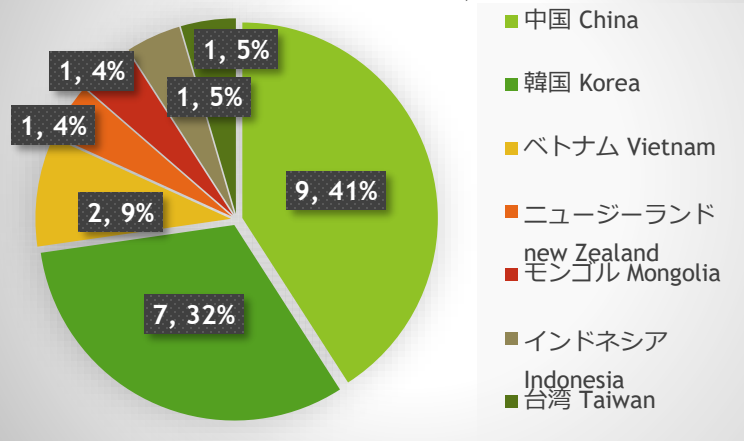
The KNU International Office provides One-stop Service to international students. The KNU International Office is the first contact point for international students whether it's the student's daily life or academic studies.

5. Glance on students' origin and funding

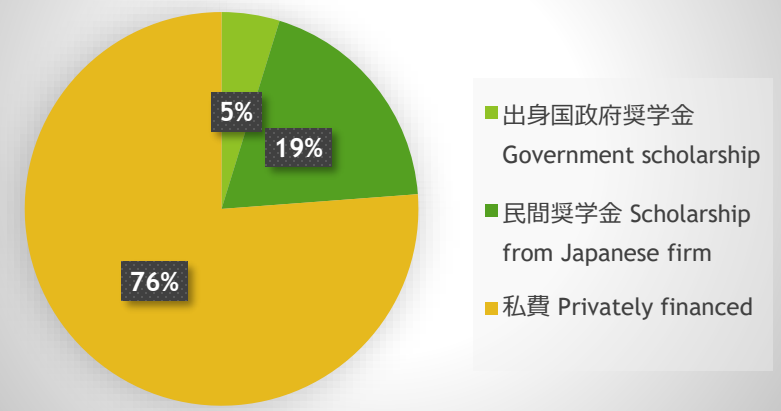
Countries of Origin (Graduate School)



Countries of Origin (Under Graduate School)



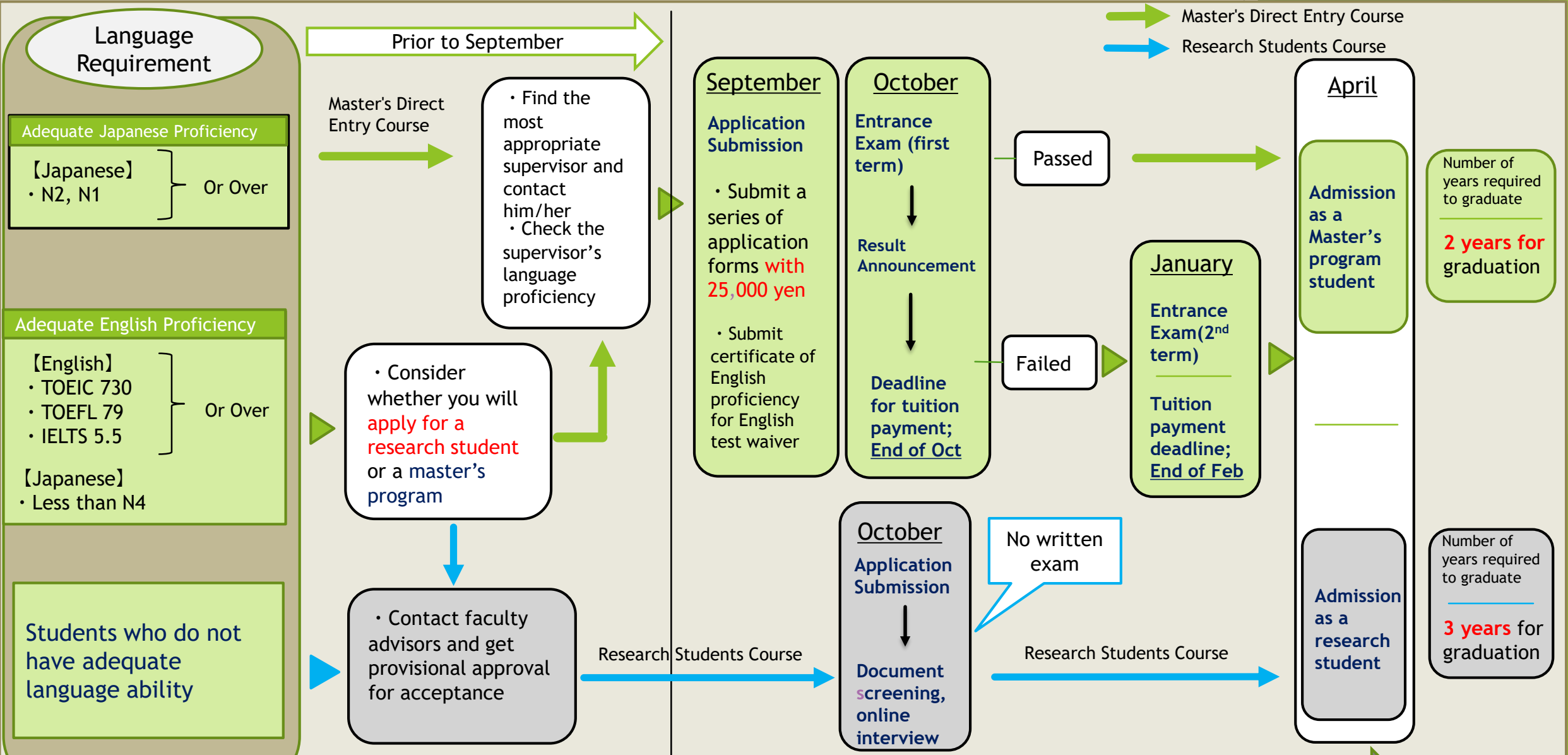
Source of funding for study abroad



	Student Numbers total past 10 years	Student Numbers AY 2021
Graduate School	18	4
Under Graduate School	22	6



6. Timeline towards Commencing Graduate Study (Master's Programs)



The entire process is supported by the International Office.

7. Application and Entrance Exam

Applying by October is recommended

Two paths to admission to the Graduate School of KNU

Research Students Course 3 years to acquire a master's degree

Students who:

- do not have an adequate level of language (English/Japanese) ability
- do not have enough money saved to cover two years of master's program tuition
- need to get used to research supervisors and the university
- are not clear about research topics

Apply as a Research Student

- Enroll as a research student for one year (Student visa will be provided)
- Study Japanese in Japanese language classes and laboratories without extra cost for one year to familiarize yourself with your supervisor and the university.

Screening

【Screening】

- Document review
- Interview (Japanese or English)

【Tuition】 40,000JPY/month

【Application Documents】

- Application Form
- CV
- Research Description
- Recommendation Letter
- Copy of Graduation Certificate
- Copy of Transcript

Master's Direct Entry Course 2 years to acquire a master's degree

Students who:

- have an adequate level of language ability (English speakers are advised to select an English-speaking research supervisor.)
- have clear research topics
- have enough money saved to cover two years of master's program tuition

Apply for the Master's Program Directly

The English exam will be waived for students who have received a TOEIC score of 730 or higher, a TOEFL score of 79 or higher, or an IELTS score of 5.5 or higher.

【Subjects of Entrance Exam】

<u>Students who have adequate English proficiency</u>	<ul style="list-style-type: none"> • Professional Examination • Interview
<u>Students who do NOT have adequate English proficiency</u>	<ul style="list-style-type: none"> • English • Professional Examination • Interview

【Date of Entrance Exam】

- **First Term (2021)**
19th October (Tue)
20th October (Wed)
- **Second Term (2021)**
18th January (Tue)
19th January (Wed)

■ **Professional Examination:**
A written examination on your own research field, given by your academic advisor. (Questions and answers in Japanese or English)

■ **Interview:** Brief question-and-answer session in Japanese to check your Japanese communication skills.

■ **English:** This is a written test in which you will be asked to translate English into Japanese.

8. Tuition

1. Graduate School (First year)

	Master's Program Nutrition Program/Health Program	Doctoral Program Nutrition Program/Health Program
Admission Fees	JPY 200,000	JPY 200,000
Tuition	JPY 528,000	JPY 528,000
Experiment and Practical Training Fees	JPY 521,000	JPY 521,000
Facilities Fees	JPY 23,000	JPY 23,000
Total (First year)	JPY 1,272,000	JPY 1,272,000

[tuition reduction and exemption system for the doctoral program]

Students with excellent character and academic performance will be exempted from the second semester of tuition for the first year, and the full amount of tuition for the second and third years.

2. Research Student

	Research Student of Graduate School
Monthly Tuition	JPY 40,000
Total (year)	JPY 480,000 (year)

3. Under Graduate School (First year)

Department Name	Applied Nutrition	Health and Nutrition		Food Culture and Nutrition
		Nutrition Sciences	Health and School Nursing	
Total (First year) / JPY	JPY 2,196,100	JPY 2,187,100	JPY 2,162,300	JPY 2,138,800



9. Available Awards and Scholarships

Scholarship Name	Requirements	Amount
Scholarship program for privately financed international students	All privately financed graduate students are eligible to apply. Document screening is required. (Recommendation from the Dean of the Graduate School is required.)	JPY100,000/year (x 2 years)
Kouyukai Wakaba Scholarship	Students who are motivated to improve their academic performance with the aim of engaging in social activities that utilize their expertise	JPY100,000/year
Aya Kagawa Incentive Award	The award is given to students who have excellent academic records, actively participate in extracurricular activities such as sports and the arts, campus events, and volunteer activities, and serve as role models for others.	JPY150,000/year
Special scholarship program for graduate school students	Applicants with excellent performance on the graduate school entrance examination	Waiver of all entrance fees and tuition



Keiko-ARAI Global Human Resource Development Scholarship (G-HRDS)	Conditions	Amount
Students living overseas	Students who graduated from one of KNU's affiliated universities	Waiver of all educational expenses, including entrance fees
Students advancing to the doctoral program directly from KNU graduate school (master's)	Students who aim to pursue a career in research, government, international organizations, or global companies in the future	Waiver of all educational expenses, including entrance fees

Recommended for international students who are planning to pursue a PhD.

10. Post-entry Support System

◆ Communication system using ICT

Using applications such as Skype and WhatsApp, the International Office has created an environment where we can connect with international students on a daily basis. For example, we provide support by sending photos of bulletin boards and e-mails that are in Japanese, and therefore cannot be read, to Skype, giving them simple translations, and immediately sending them back to international students. There is also a Skype group for international students, which provides an environment where students can chat on a daily basis.

◆ Resident Assistants

In the first year of the program, international students with limited Japanese proficiency will be assigned an undergraduate student "Residence Assistant" to support them in their daily lives, such as shopping and navigating the school. Every year, these assistants are very popular as they can be relied upon to help students who have just entered the school and are having a hard time making Japanese friends.

◆ International Student Exchange Program

We hold an exchange party for international students twice a year. This is a good opportunity to deepen friendships with other international students and build horizontal connections.

◆ Close communication with academic supervisors

Because of the small size of the graduate school, with about 40 students, typically an advisor will oversee only 3-4 graduate students on average. This arrangement allows students to engage in close interaction with the respective supervisors.

◆ Career Support

The International Office provides support, such as helping students register in the Employment Section and participate in employment events for international students. If you wish to work in Japan, you can receive the same services as Japanese students, such as job-hunting counseling and company introductions from the Employment Section.



11. Career Path After Graduation

Students are active in a variety of fields in Japan and abroad, making use of the results of their graduate school studies.

【Major employment opportunities for Graduate Students】

【Universities and Junior colleges】

- Kagawa Nutrition University
- Kawamura Gakuen University
- Kurashikisakuyou University
- Sagami woman's University
- Nihon University
- University of human arts and sciences
- National Defense Medical College
- Yamanashi Gakuin University

【Health, Medical and Welfare】

- Keshi medical corporation
- University of Tokyo hospital
- Tokyo Metropolitan Geriatric Hospital and Institute of Gerontology
- Japan Association for Development of Community Medicine
- Miura medical corporation
- Musashino General Hospital

【Research Institute】

- National Institute of Biomedical Innovation, Health and Nutrition
- Teikyo University, Sports, Science and Medicine

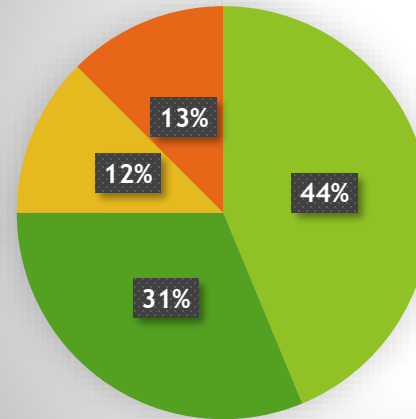
【Private Firms】

- Ajinomoto Co., Inc
- AEON RETAIL Co., Ltd
- AIM Services Co., Ltd
- OK Corporation
- Genki Sushi CO., LTD
- CramerJapan
- Zenyaku Kogyo Company, Limited
- Medical System Network Group
- JAPAN JIFFY FOODS, INC
- Noom Japan
- East Japan Railway Company
- Pickles Corporation
- YAMAMOTO-NORITEN CO.,LTD

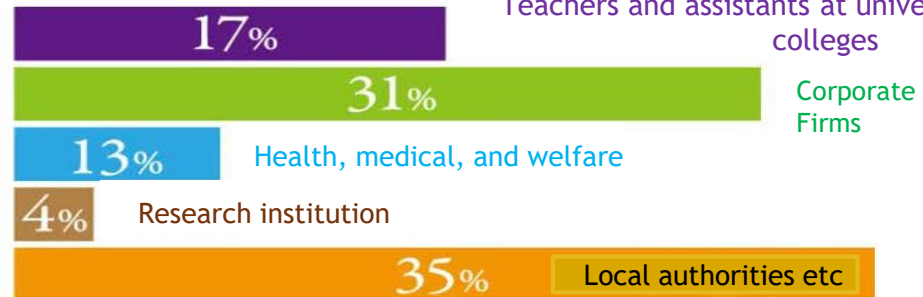
【Local Government etc】

- Teachers in prefectures and cities.
- Japan International Cooperation Agency (JICA)
- Miyazaki Prefectural Health Foundation

International Students Career Opportunities after Graduation



- 母国に帰国 (Return to home country)
- 日本国内での就職 (Employment in Japan)
- 他国への留学 (Continue further study in other countries)
- 日本国内での進学 (Continue further study in Japan)



12. International Student's Interview—(1)/Mr. WU JIAWEI

留学生

私費留学生

Born in Shenzhen, Guangdong Province, China, Mr. Wu came to Japan in October 2015, graduated from a Japanese language school in 2017, and became a research student at Tokyo Metropolitan University. He then entered the master's program at Women's Nutrition University in April 2018.

Q : Why did you choose Japan as your study destination?

Since my father works for a soy sauce related food company, I was interested in food research. Both of my parents thought that it would be better for me to go abroad at least once to broaden my horizons rather than stay in China all the time, and I was considering the U.S. and Japan as options for my study abroad, but in the end I chose Japan as my study abroad destination because the food culture is similar and Chinese food is widely popular.

Q : Why did you select Kagawa Nutrition University ?

The reason was that there was a professor (Prof. Toshihide Nishimura) at KNU who matched the research I wanted to do. At that time, Prof. Nishimura was working as a part-time lecturer at Tokyo Metropolitan University, where I first encountered his research. Dr. Nishimura is an expert in umami and functional peptides, and I wanted to do research on related issues.

Q : What do you want to do after you finish your study abroad ?

I would like to work for a Japanese food company (especially food additives and soy sauce companies such as Ajinomoto, Yamasa, Kikkoman, etc.). I am thinking of returning to China eventually, but I would like to see and learn more about the outside world.



13. International Student Interview—(2)/Mr. Akrim Said

Born in Sulawesi, **Indonesia**, Akrim came to Japan in 2019 and entered the master's program at KNU in 2020 with a scholarship from Ajinomoto Foundation. He **had** never studied Japanese before coming to Japan.



Q: Why did you choose Japan as your study destination?

I was impressed by the nutritional management conducted in Japan and its practice as represented by school lunches. I thought it would be interesting and easy for children to understand the message of nutrition by combining nutrition education and *kyaraben*, which are lunch boxes with anime characters, and I wanted to do research on nutrition education in Japan.

Q: Why did you select Kagawa Nutrition University ?

KNU is a university with only the Faculty of Nutrition, and I thought I could conduct in-depth and broad research on nutrition. Also, I had studied "Human Ecology and Community Nutrition" in Indonesia, and there was a laboratory in the same field (food ecology). There are still no specialists in this field in Indonesia, so I thought it would be worth learning.

Q: What do you want to do after you finish your study abroad ?

I want to become a nutrition expert (nutritional food ecologist) specializing in the Islamic lifestyle. Since 1/3 of the world's population is Muslim, I would like to be involved in the development of easy-to-understand nutrition education books for Muslims.



14. Graduate School Facilities

Campus

Sakado



International Office: International students who want to have a discussion or a chat gather here.



Common Space: Common space for graduate students. A place for Japanese and international students to interact.



A kitchen is also available

Lounge: When you are tired from your research, take a break on the sofa.



There are many computers that you can borrow in the study room.



Spacious study room for graduate students



Lecture rooms for graduate students are also available.